

## Monthly Weather Sumillimetersary in Thailand April 2020

In April 2020, the weather condition was hot in most areas of upper Thailand with very hot in many places. Meanwhile, the weather turned to hot in most of southern part almost the whole month as a result of the heat low pressure cell covering upper Thailand. The mean temperature in April 2020 were higher than normal in all parts and the new highest maximum temperature were established in some stations. However, due to the influence of the rather active high pressure area from China extending its ridge to cover upper Thailand and the South China Sea during the middle and the end of the month in addition with the periodical prevailing of the southerly and southeasterly wind over upper Thailand which brought the moisture from the Gulf of Thailand and the westerly trough through the northern part during the end of the month. These caused unusual rainfall with thundershower, gusty wind and hail in many areas and hail in some places. In southern part, the weather condition was periodically dominated by the easterly wind prevailing over the Gulf of Thailand and the southern part that cause of rainfall during this time. Monthly rainfall was above normal in northern part 10.6 millimeters (15%), eastern part 31.5 millimeters (32%), and southern part (east coast) 33.8 millimeters (45%) while it was below normal in northeastern part 17.7 millimeters (21%), central part 39.6 millimeters (50%), and southern part (west coast) 18.1 millimeters (11%). The total rainfall over Thailand in this month was 91.1 millimeters or about 3% above the normal. The details are as follows:

**1 – 10 April:** Heat low pressure cell covering upper Thailand and the southerly and southeasterly wind prevailing over the mentioned areas almost the whole period. These conditions caused hot weather in most areas of upper Thailand and very hot weather in many areas with extremely hot of 43.0 °C at Amphoe Thoen in Lamphang province on April 1. Moreover, the high pressure from China extended its right to cover Vietnam, Laos and the South China Sea during the first half of the period resulted in unusual rainfall with thundershower over upper Thailand especially in the northeastern part that obtained isolated to scattered rain with heavy rainfall in some areas during this time. The maximum daily rainfall of 108.0 millimeters was recorded at Amphoe Ban Khwao in Chaiyaphum province on April 3. Thunderstorms was observed at Mukdahan, Nakhon Ratchasima, Prachin Buri and Trat provinces on April 2 and at Chaiyaphum, Nakhon Sawan and Lopburi provinces on April 3 and at Nong Khai province on April 4 and at Khon Khen province on April 4, 6 and 11 and at Loei province on April 5 and at Si Saket province on April 7 and at Nakhon Ratchasima province on April 8, 10 and at Sukhlothai, Nakhon Sawas and Chonburi provinces on April 9. In southern Thailand, received isolated to fairly widespread rain almost the period with heavy rainfall in some areas mainly along west coast. The highest daily rainfall was 63.4 millimeters at Amphoe Mueang in Satun province on April 2

**11 – 20 April:** Heat low pressure cell covered over upper Thailand during early and late period and the rather active high pressure areas extended its ridge to cover upper Thailand and the South China Sea during mid-period with the prevailing of the southerly and southeasterly wind over the lower northern, northeastern, central and eastern parts during the second half of the period. These caused hot weather in most of upper Thailand almost the period with very hot weather in many areas of northern and central parts. The highest maximum temperature was 42.0 °C at Amphoe Thoen in Lamphang province on April 12. For rainfall, scattered to fairly widespread rain almost the period with heavy rainfall in some areas of northeastern part whereas unusual rainfall with thundershower in some areas of the rest parts. The maximum daily rainfall of 147.2 millimeters at Bangrakam in Phitsanulok province on April 12. Thundershower was observed at Khon Khen, Nakhon Ratchasima and Chachoengsao provinces on April 11 and at Phitsanulok, Nakhon Ratchasima, Khon Khen and Nakhon Sawan provinces on April 12 and at Phitsanulok, Chiang Rai, Chiang Mai, Phayao, Nan Nong Khai and Ratchaburi provinces on April 13 and at Chiang Mai and Mae Hong Son provinces on April 18. The hail was reported at Lamphang province on April 15. In southern part, the easterly wind which prevailed over the Gulf of Thailand and southern part was active during mid-period, rainfall was increased and scattered to fairly widespread rain with heavy to very heavy rainfall in some areas. The highest daily rainfall was 93.0 millimeters at Lang Suan Agricultural Extension Office in Chumphon province on April 15.

**21 – 30 April:** Heat low pressure cell covering upper Thailand and the southerly and southeasterly wind prevailing over the mentioned areas during early period. The rather active high pressure areas from China covered upper Thailand and the South China Sea during mid-period. Moreover, the westerly trough through the northern part during late period. The weather in upper Thailand was hot weather in most of areas and very hot weather in several areas during the first half of the period. The highest maximum temperature was 43.5 °C at Amphoe Mueang in Tak on April 21. For rainfall, increasing rainfall over upper Thailand from last period and scattered to fairly widespread rain with heavy to very heavy rainfall in some areas mainly during middle and late period except for scattered rain was found in northeastern part on April 22 and 24. The maximum daily rainfall in upper Thailand was 126.6 millimeters at Phitsanulok Rice Research Station in Phitsanulok province on April 24. Thunderstorm was observed at Nakhon Phanom province on April 21, at Phrae, Phichit, Bueng Kan, Udon Thani, Sakon Nakhon, Kalasin, Roi Et, Amnat Charoen, Nakhon Ratchasima, Si Saket, Ubon Ratchathani and Chonburi provinces on April 22, at Nakhon Sawan, Ang Thong, Saraburi, Nakhon Nayok, Sa Kaeo, Chanthaburi and Trat provinces on April 23, at Phayao, Lamphang, Khon Khen and Maha Sarakham provinces on April 24, at Lamphun, Tak and Chonburi provinces on April 25 and at Chiang Mai province on April 26. Hail occurred at Nan, Lamphang, Phetchabun, Mukdahan, Loei and Nong Khai provinces on April 22, at Chiang Rai province on April 23

and 24 and at Udon Thani province on April 24. In southern part, scattered to fairly widespread rain with heavy to very heavy rainfall in some areas mainly during the second half of the period by the prevailing of the easterly wind over the Gulf of Thailand and southern part was active during the mentioned period with highest daily rainfall of 90.0 millimeters at Pa Phayom in Phatthalung province on April 27.

---

**Breaking record of daily maximum temperature over Thailand in April 2020**

Station	New Record 2020		Previous Record		Start Year
	Temperature(°C )	Date	Temperature(°C )	Date	
Chiang Mai	42.0	1	41.6	19/2562	2495
Mae So (Tak)	41.5	21,23	41.2	19/2559	2494
Lom Sak (Phetchabun)	42.3	21	42.0	18/2559	2513
Tak Fa Agromet. Stn. (Nakhon Sawan)	42.0	21	41.7	22,26/2559	2512
Chai Nat Agromet. Stn.	41.0	21	41.8	11/2559	2513
Chathaburi	37.3	26	37.1	15/2494	2494

**Note** : Rainfall, temperatures and natural disasters in this report were updated up to May 7, 2020.

Climatological Center  
 Meteorological Development Division  
 Meteorological Department

Monthly Current Report  
Rainfall and Accumulative Rainfall  
April 2020

Northern Thailand

Station	Temperature ( °c)		Rainfall (mm)		Accumulative rainfall (mm) Since 1 January	
	Mean	Above or below normal	Actual	Above or below normal	Actual	Above or below normal
Chiang Rai	27.6	0.5	88.5	-9.4	89.3	-58.1
Mae Hong Son	31.1	1.0	108.0	44.8	108.1	15.7
Phayao	29.6	0.9	147.5	58.3	147.5	13.2
Chiang Mai	30.7	1.4	64.2	6.9	69.3	-18.9
Tha Wang Pha	29.6	1.3	59.2	-43.3	74.2	-77.8
Nan	30.3	1.3	129.5	29.9	131.9	-16.7
Lamphun	31.0	0.9	85.8	41.3	87.8	22.5
Lampang	31.7	1.7	94.5	28.6	97.3	-3.0
Mae Sariang	30.1	0.8	52.0	7.3	52.0	-14.9
Phrae	31.7	1.7	57.4	-24.7	59.7	-64.6
Uttaradit	31.6	0.8	84.0	13.0	84.7	-29.7
Bhumibol Dam	32.0	1.1	47.3	-18.8	47.3	-49.4
Tak	32.2	0.7	75.9	18.3	75.9	-4.6
Mae Sot	30.4	1.3	37.5	-7.3	37.5	-32.7
Umphang	27.2	1.1	90.3	-11.0	90.6	-74.5
Phitsanulok	31.1	0.3	158.0	102.3	192.3	92.5
Lom Sak	30.0	0.8	32.8	-30.4	193.1	64.2
Phetchabun	31.1	1.3	114.0	38.0	157.1	11.5
Wichian Buri	31.6	1.2	57.1	-32.8	85.8	-75.0
Kamphaeng Phet	31.1	0.7	53.6	0.8	61.3	-43.6
Over the area	30.6	1.1	81.9	10.6 15%	97.1	-17.3 -15%

Northeastern Thailand

Station	Temperature ( °c)		Rainfall (mm)		Accumulative rainfall (mm) Since 1 January	
	Mean	Above or below normal	Actual	Above or below normal	Actual	Above or below normal
Nong Khai	29.6	0.1	69.9	-13.5	125.1	-23.7
Loei	28.3	-0.1	75.5	-27.2	161.7	-2.6
Udon Thani	29.7	-0.1	4.0	-70.1	114.5	-37.6
Nakhon Phanom	28.9	-0.1	29.3	-71.8	117.9	-77.3
Sakon Nakhon	28.4	-0.7	29.3	-64.0	170.4	-14.4
Mukdahan	29.0	-0.6	53.4	-23.0	103.6	-32.7
Khon Kaen	29.5	-0.4	35.6	-54.0	130.7	-26.4
Kosum Phisai	29.9	-0.2	160.4	71.4	278.6	119.3
Roi Et	29.7	-0.1	116.2	40.3	172.7	32.8
Chaiyaphum	30.1	0.1	157.1	64.5	189.5	26.8
Ubon Ratchathani	30.2	0.2	55.0	-31.8	57.3	-77.4
Tha Tum	29.8	-0.6	38.3	-48.4	57.6	-94.5
Surin	30.2	0.4	90.0	-3.3	92.0	-64.0
Nakhon Ratchasima	30.5	0.5	36.9	-35.3	71.4	-62.2
Chok Chai	30.1	0.5	50.1	-31.2	82.2	-55.4
Nang Rong	29.5	0.0	96.5	14.9	171.7	17.9
Over the area	29.6	-0.1	68.6	-17.7 -21%	131.1	-23.2 -15%

- NOTES : 1) Mean temperature is the average of daily dry-bulb temperature  
2) "T" is trace, rainfall amount less than 0.1 mm.  
3) "blank" is incomplete data.  
4) Temperature and rainfall are preliminary data.

Monthly Current Report  
Rainfall and Accumulative Rainfall  
April 2020

Central Thailand

Station	Temperature ( °c)		Rainfall (mm)		Accumulative rainfall (mm) Since 1 January	
	Mean	Above or below normal	Actual	Above or below normal	Actual	Above or below normal
Nakhon Sawan	32.9	1.5	2.0	-61.7	22.4	-90.6
Bua Chum	31.6	1.3	20.4	-61.0	46.5	-96.5
Lop Buri	31.9	1.5	3.5	-78.0	41.1	-85.1
Suphan Buri	31.5	1.1	12.9	-36.2	30.4	-48.2
Thong Pha Phum	30.5	0.7	120.2	18.4	125.2	-44.8
Kanchanaburi	31.3	0.3	36.4	-42.1	50.8	-78.2
Bangkok Airport	30.9	0.5	81.4	-7.1	127.8	-21.5
Bangkok Metropolis	30.7	0.2	42.5	-48.9	107.2	-59.6
Over the area	31.4	0.9	39.9	-39.6 -50%	68.9	-65.6 -49%

Eastern Thailand

Station	Temperature ( °c)		Rainfall (mm)		Accumulative rainfall (mm) Since 1 January	
	Mean	Above or below normal	Actual	Above or below normal	Actual	Above or below normal
Prachin Buri	31.2	1.1	93.1	-24.9	106.0	-85.4
Kabin Buri	29.9	0.1	132.0	33.2	200.7	16.5
Aranyaprathet	30.7	0.6	115.0	29.3	211.1	40.0
Chon Buri	30.5	0.3	147.4	73.3	232.6	86.8
Ko Sichang	30.0	0.2	103.1	25.8	116.0	-37.5
Pattaya	29.5	0.2	125.4	61.4	155.6	8.4
Sattahip	30.0	0.2	175.0	96.1	190.0	7.3
Rayong	29.7	-0.3	117.3	35.7	165.8	-43.3
Chanthaburi	29.3	0.6	102.3	-22.9	268.2	16.0
Khlong Yai	28.5	0.0	193.1	7.7	468.8	44.9
Over the area	29.9	0.3	130.4	31.5 32%	211.5	5.3 3%

- NOTES :
- 1) Mean temperature is the average of daily dry-bulb temperature
  - 2) "T" is trace, rainfall amount less than 0.1 mm.
  - 3) "blank" is incomplete data.
  - 4) Temperature and rainfall are preliminary data.

Monthly Current Report  
Rainfall and Accumulative Rainfall  
April 2020

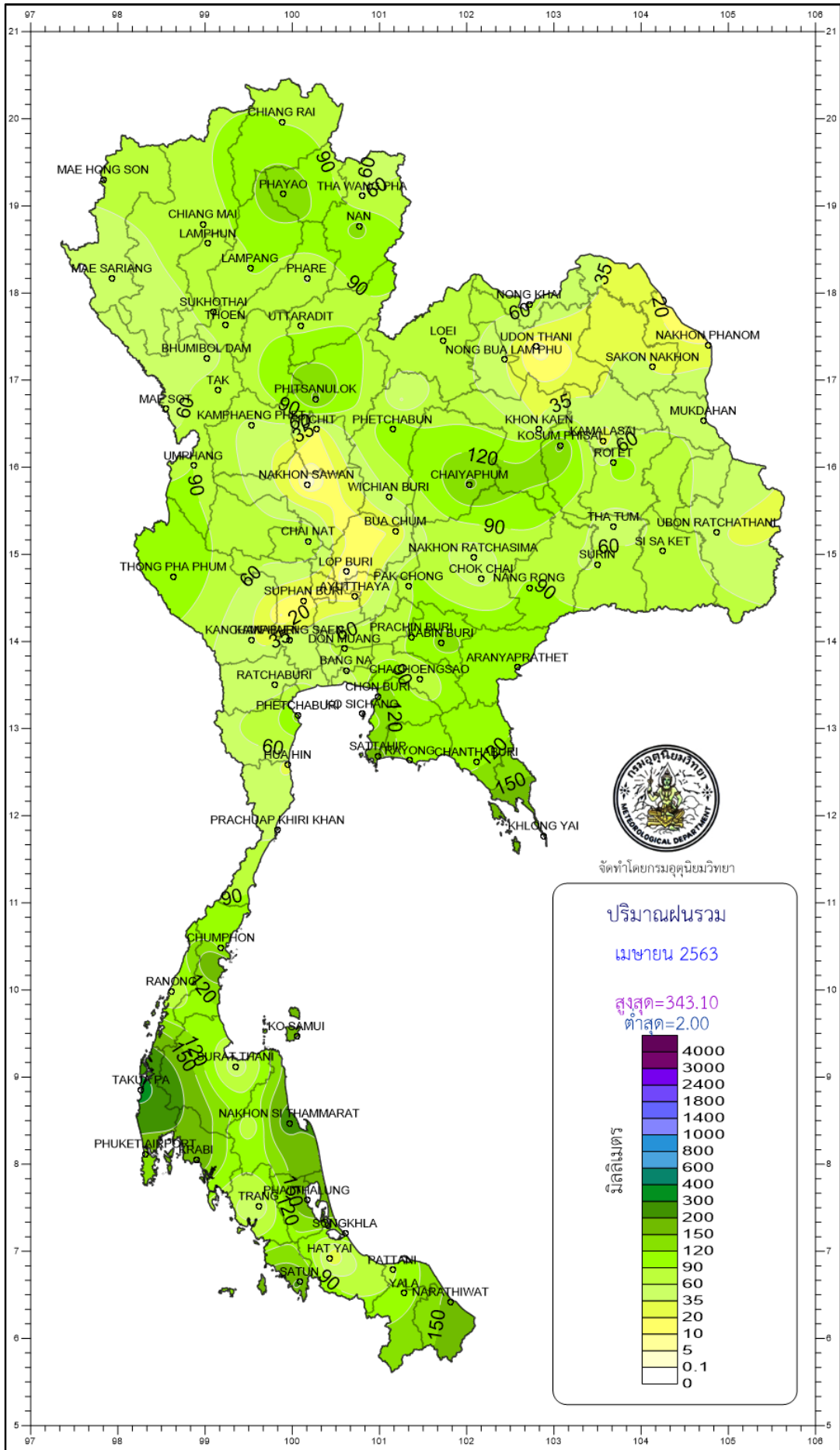
Southern Thailand, east coast

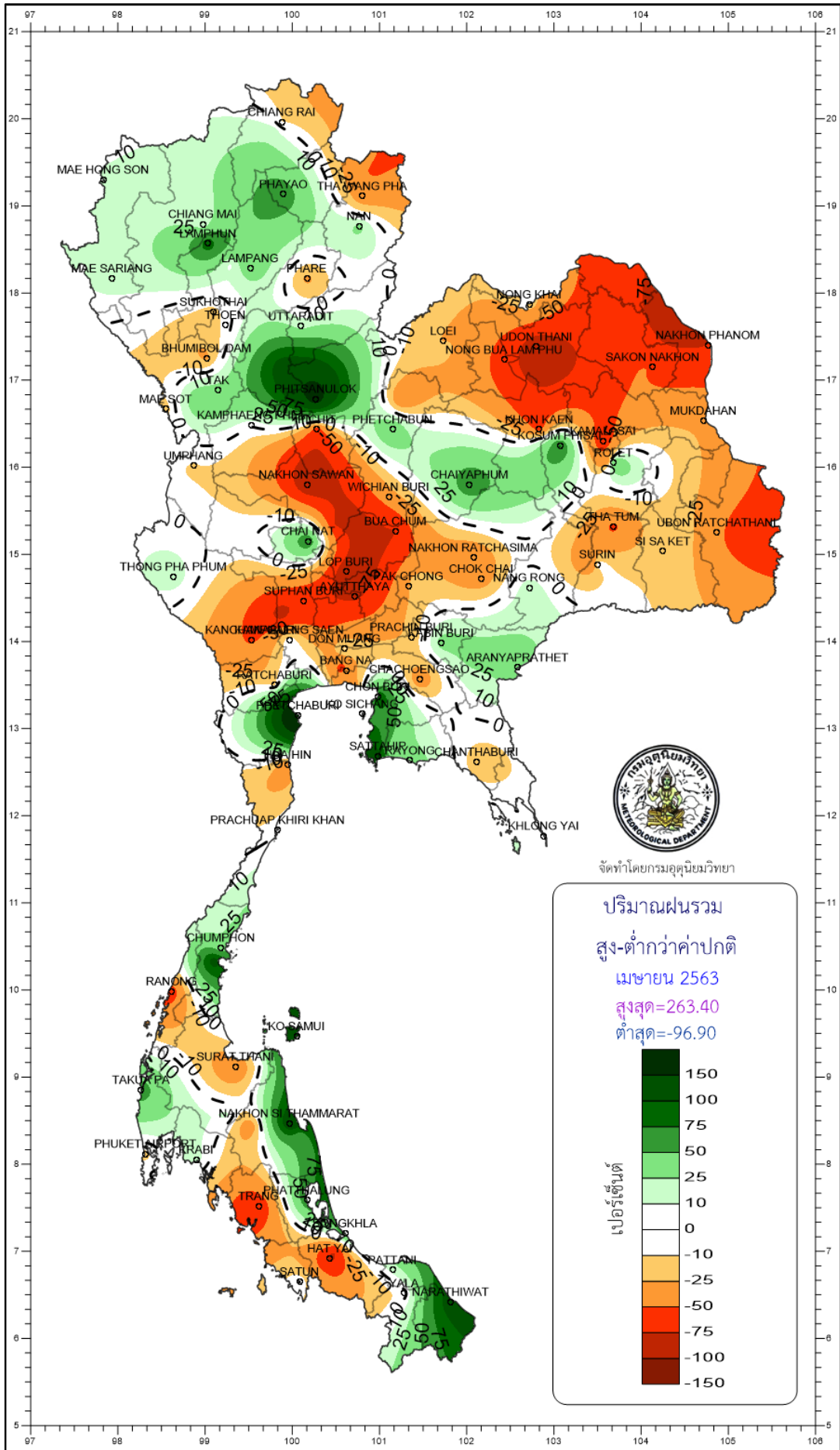
Station	Temperature ( °c)		Rainfall (mm)		Accumulative rainfall (mm) Since 1 January	
	Mean	Above or below normal	Actual	Above or below normal	Actual	Above or below normal
Phetchaburi	30.3	0.6	134.1	97.2	141.4	56.1
Hua Hin	29.7	0.1	25.5	-20.9	38.6	-88.8
Prachuap Khiri Khan	29.6	0.4	54.3	-1.2	82.1	-91.4
Chumphon	28.8	0.1	111.2	25.4	327.0	39.9
Surat Thani	29.3	1.0	37.5	-35.9	48.1	-98.4
Ko Samui	29.3	0.2	191.2	108.1	276.1	-28.4
Nakhon Si Thammarat	28.7	0.3	249.6	142.6	317.3	-93.0
Songkhla	29.4	0.5	126.5	51.4	199.4	-58.8
Hat Yai Airport	29.1	1.1	23.6	-95.0	70.2	-201.7
Pattani Airport	29.1	0.9	85.8	11.2	122.2	-84.7
Narathiwat	28.7	0.4	161.6	88.8	278.4	-67.1
Over the area	29.3	0.5	109.2	33.8 45%	172.8	-65.2 -27%

Southern Thailand, west coast

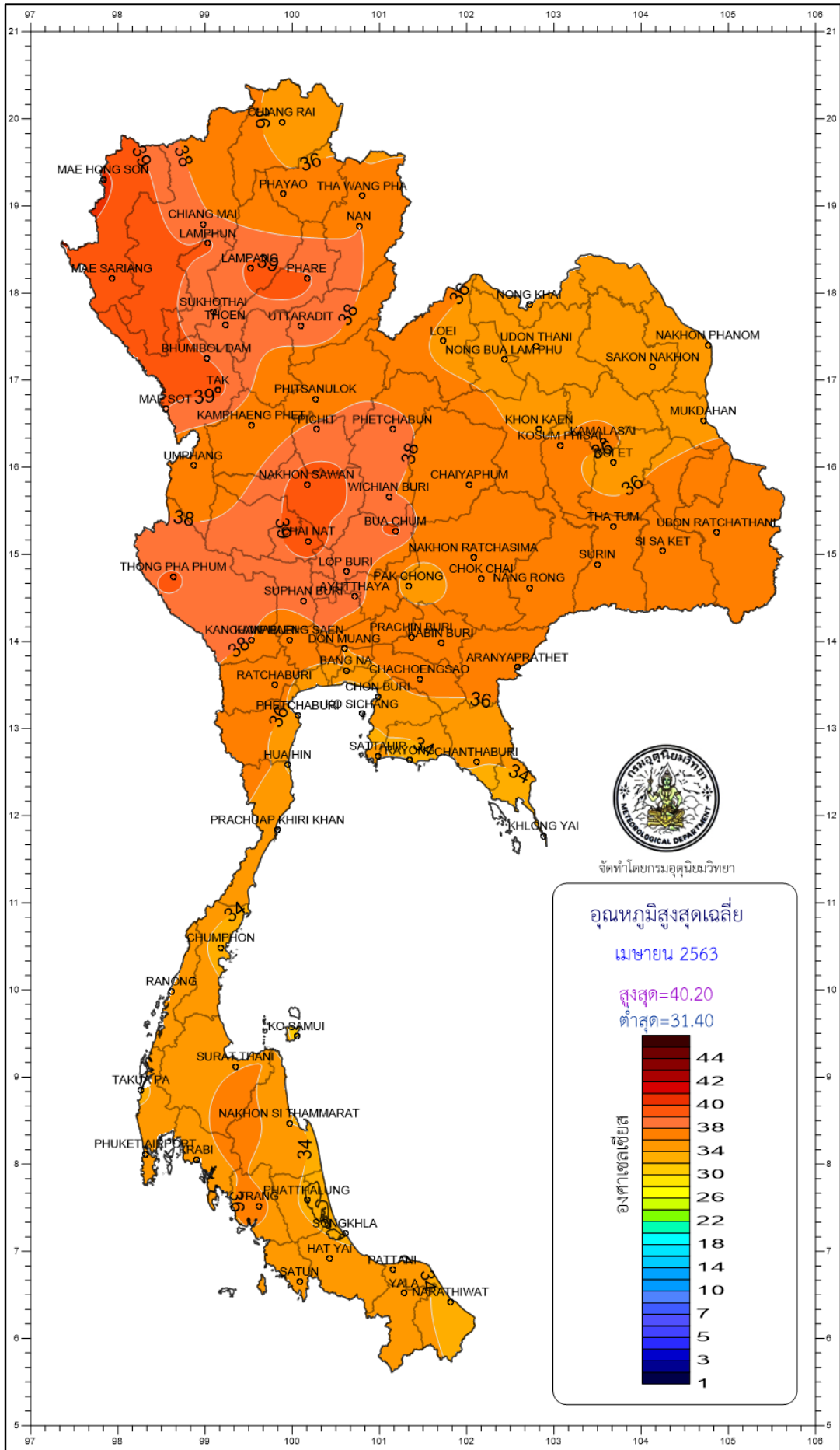
Station	Temperature ( °c)		Rainfall (mm)		Accumulative rainfall (mm) Since 1 January	
	Mean	Above or below normal	Actual	Above or below normal	Actual	Above or below normal
Ranong	29.7	0.9	52.9	-99.7	76.5	-167.3
Takua Pa	28.4	0.2	343.1	133.1	348.7	-56.4
Phuket	30.5	1.1	145.0	2.1	156.2	-114.4
Phuket Airport	29.3	0.7	131.8	-22.2	178.1	-139.6
Ko Lanta	29.6	0.6	83.0	-36.0	98.6	-115.8
Trang Airport	29.7	1.4	34.8	-104.9	90.6	-185.8
Satun	28.9	0.5	206.9	0.9	327.9	-67.1
Over the area	29.4	0.7	142.5	-18.1 -11%	182.4	-120.9 -40%

- NOTES :
- 1) Mean temperature is the average of daily dry-bulb temperature
  - 2) "T" is trace, rainfall amount less than 0.1 mm.
  - 3) "blank" is incomplete data.
  - 4) Temperature and rainfall are preliminary data.

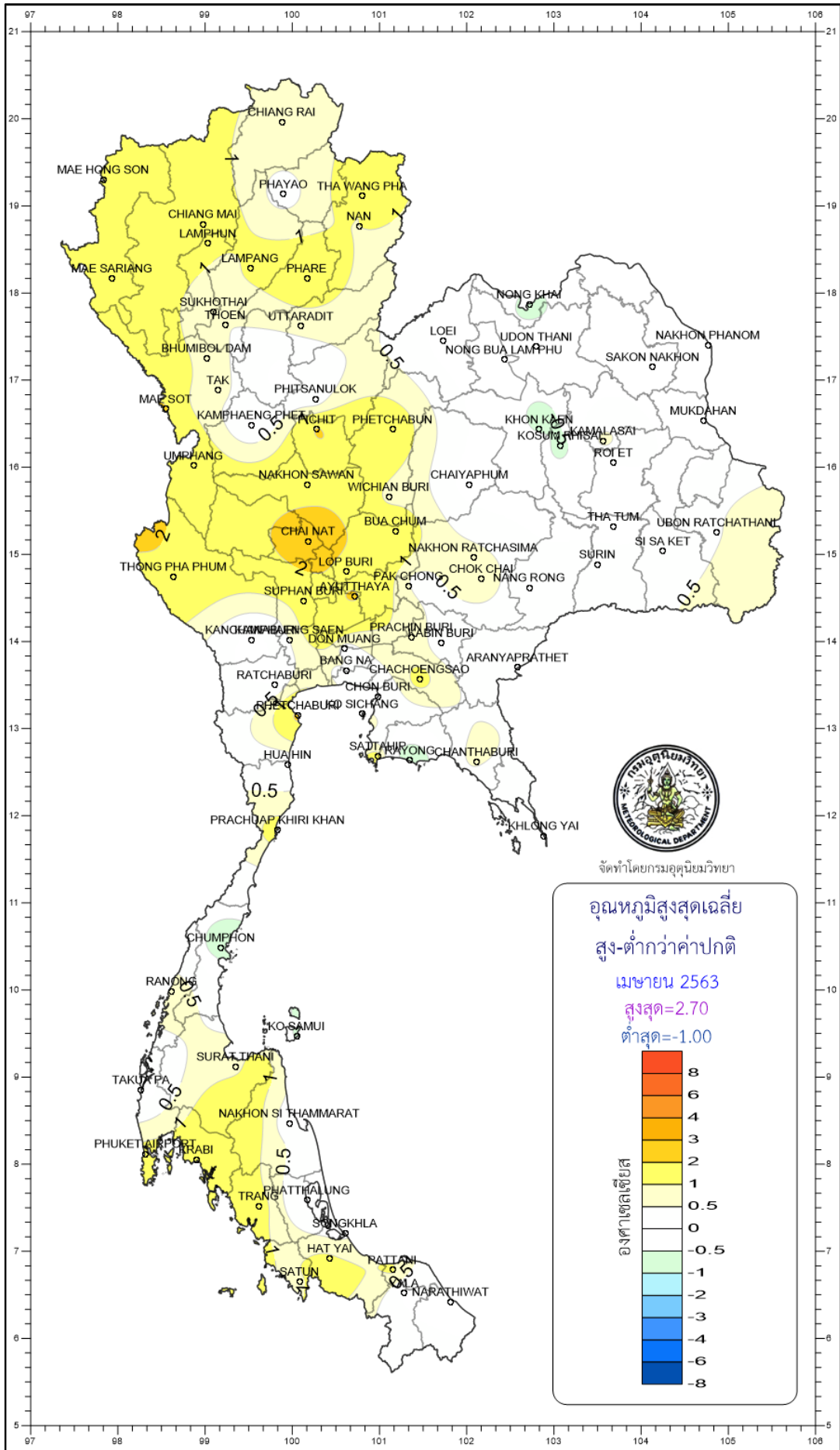


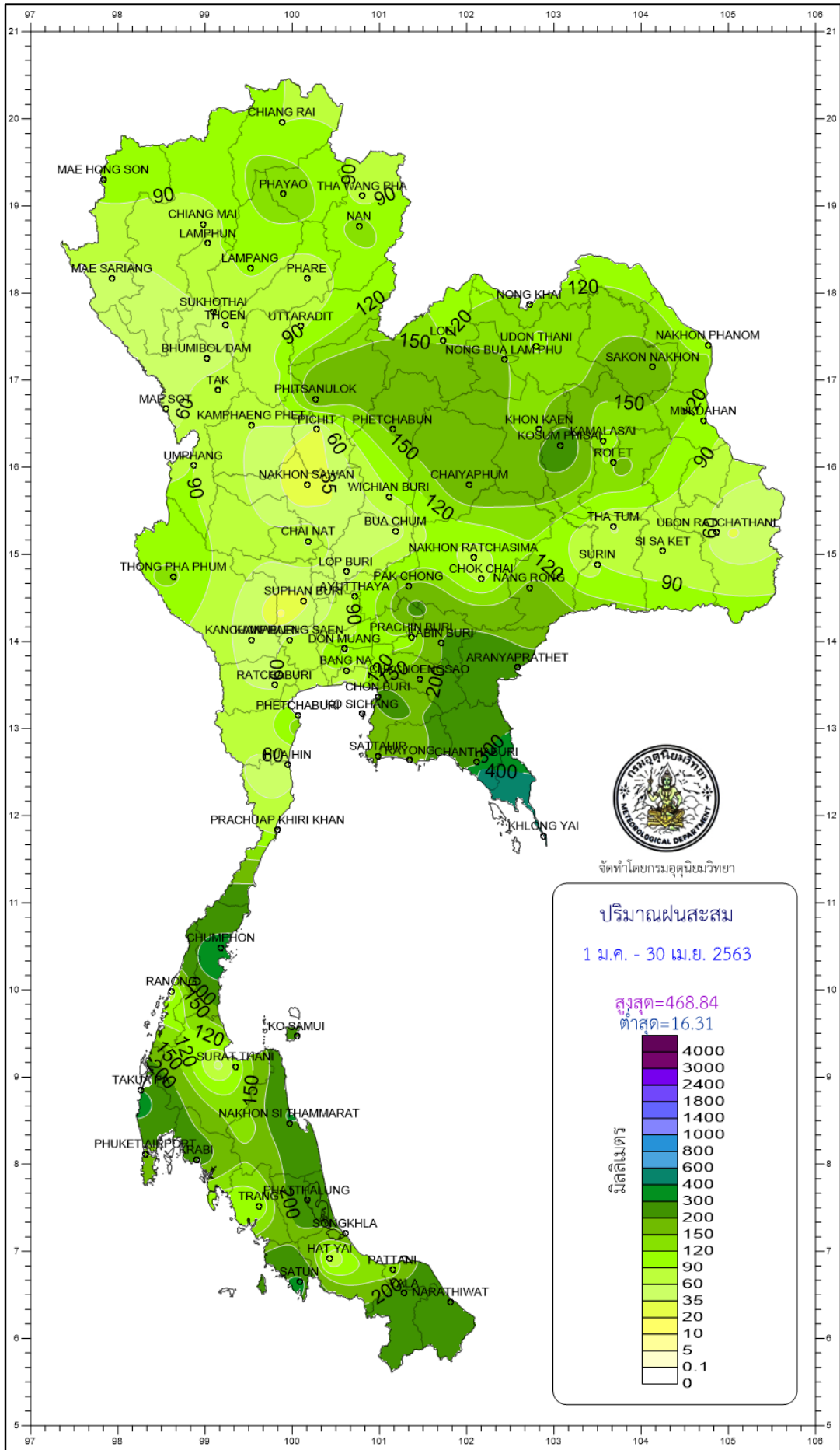






จัดทำโดยกรมอุตุนิยมวิทยา





จัดทำโดยกรมอุตุนิยมวิทยา

